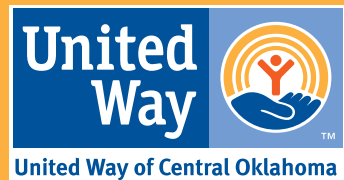
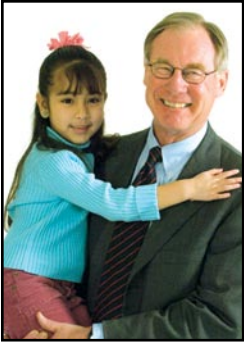




2006
Annual Report
 Your community.
Your investment.



Letter from the Chairman



Looking back over the past two years as Chairman of the United Way Board of Directors, I am struck by many things. The vitality of the organization, its importance to our community, the enthusiasm they bring to challenging fund raising activities - these are all significant factors.

Most of all, however, I see the leadership United Way and its volunteers and staff bring to nearly every facet of our community. For example:

- Three straight years, we've had substantial campaign growth. This comes in large measure from the great volunteer leadership shown by our campaign chairs, but it also comes from United Way's position as the primary source of long-term solutions to community issues.
- United Way of Central Oklahoma is involved in helping lead major community efforts to make this the best place to live in Oklahoma and in America. Whether preparing a response to a potential disease pandemic, developing the first partnership in the nation between a United Way and Educare to create a dynamic early childhood education facility, or simply making sure that funds spent are accountably managed, your United Way is at the forefront.
- The Partner Agencies with which United Way invests our charitable dollars are the best in central Oklahoma at what they do. They are held to the highest quality standards. The leadership of these agencies is also top notch.

It seems clear that our community's future is the brightest it has ever been. Without a doubt, partnerships between our Chamber of Commerce, our school systems, local government and business are blazing new trails. United Way of Central Oklahoma is an important part of those partnerships, and you can be very proud to be a supporter of this fine organization. It's an investment well spent!

Burns Hargis
2005- 2006 Board Chairman

Table of Contents

United Way is Leading the Way	1
Community Preparedness	2
Healthy Citizens	3
Strong Families	4
Successful Kids	5
Independent Living	6
Community Investment / Allocations	7
Campaign Report	8
Media Donations	8
Financial Position	9
Board of Directors	BC



A wise investment in your community.

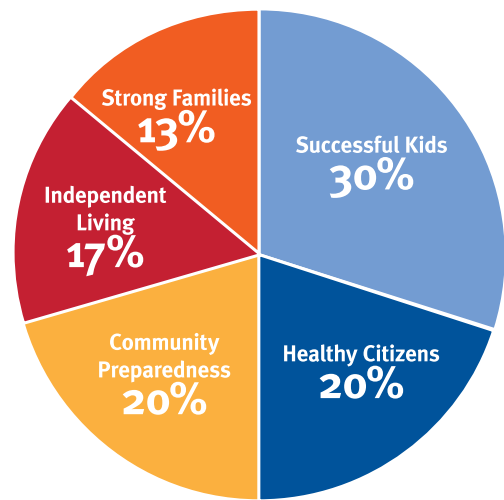
When it comes to improving lives and strengthening communities, United Way is leading the way. In 2006 alone, United Way of Central Oklahoma served 370,057 local people. Over 1,000 volunteers engaged in every aspect of our work. And, more than 50,000 local donors chose to invest with us, supporting our efforts to build a stronger, healthier and more compassionate community.

At our core, we value four basic elements critical for success to individuals, families and our community. Ensuring health, education, financial stability and quality of life for all central Oklahomans is our enduring goal.

United Way of Central Oklahoma is more focused than ever before. Five Focus Areas define our work and guide our funding. **Successful Kids, Strong Families, Healthy Citizens, Independent Living,** and **Community Preparedness** are the keystones around which we achieve our goals for all people in our community.

As a donor or volunteer, United Way maximizes your impact. By coordinating the collective strengths of businesses, labor organizations, non-profit partners and thousands of local contributors, United Way accomplishes what no other organization can. Together, we deliver long-term solutions for individuals and families in central Oklahoma.

2006 United Way funding breakdown by percentage:



Through United Way, you helped 370,057 people in 2006. Here is the breakdown by Focus Area:

63,892 Kids are more successful

102,379 Family members served

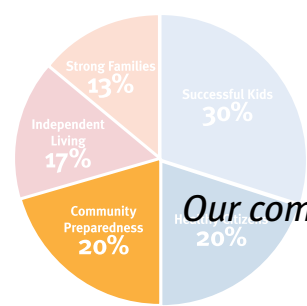
98,030 Citizens are healthier

22,921 People are living more independently

82,836 Community members assisted

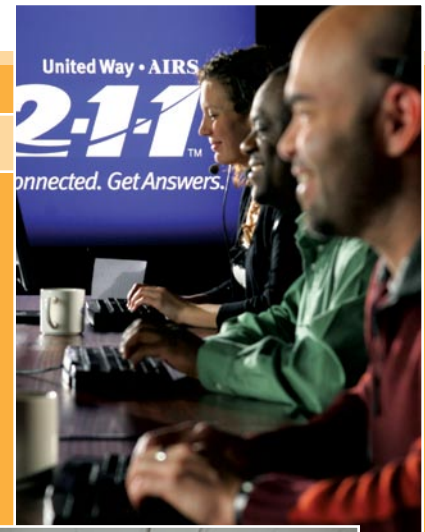


Together, we're building a stronger, healthier and more compassionate community.



Community Preparedness

Our community is prepared to respond to individual and community emergencies.



Initiatives: 2-1-1, CAN (Coordinated Assistance Network)

United Way is committed to meeting needs in emergencies large and small, both in the immediate aftermath and for the long-term. The establishment of our local 2-1-1 call center was a critical upgrade in our level of preparedness.

2-1-1 is like 9-1-1 for community services. Thanks to United Way and other funders, it is available 24 hours a day, 365 days a year for people in need. After the severe ice storms in the winter of 2006, 2-1-1 operators at HeartLine received more than 100 calls from people who were home bound and hungry.

2-1-1 staff recognized the emergency situation and called United Way. Our staff immediately met with leaders from county government and other non-profits and began to respond. Within a few hours, food packages were available and county sheriffs braved the icy roads to make deliveries. Since then, we have led the effort to formalize this response plan for future storms.

Community Preparedness Partner Agencies:

- American Red Cross, Canadian Valley Chapter
- American Red Cross of Central Oklahoma
- American Red Cross, Heart of Oklahoma Chapter
- Catholic Charities
- HeartLine, Inc.
- Mental Health Association of Central Oklahoma, Inc.
- Neighborhood Services Organization, Inc.
- Positive Tomorrows
- Safe Kids Oklahoma
- Salvation Army
- Travelers Aid & Homeless Assistance Center
- Youth and Family Services, Inc.
- YWCA Oklahoma City



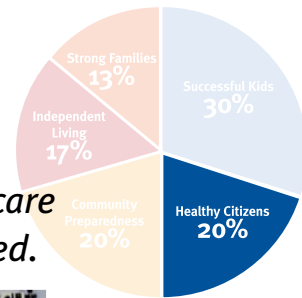
United Way Impact

82,836 Community members assisted

\$1,819,744 Invested in Community Preparedness

Healthy Citizens

Central Oklahomans have access to physical and mental health care and adopt healthy lifestyles. Important health research is funded.



Initiative: Central Oklahoma Turning Point

United Way continues its focus on improving the health of local residents. With Oklahoma's overall health ranking as 44th in the United States, Central Oklahoma Turning Point is leading the effort to increase public awareness of this significant problem.

In April 2006, Turning Point hosted the second Oklahoma Wellness Week/National Public Health Week reaching thousands of people with educational information. In partnership with The Oklahoman, Oklahoma City/County Health Department, YMCA and others, the week included the annual Walk This Weigh, a Bricktown health fair with more than 3,500 attendees, a workshop for companies creating wellness programs for employees, public lectures presented in partnership with the OU College of Public Health, and a special health section in The Oklahoman.

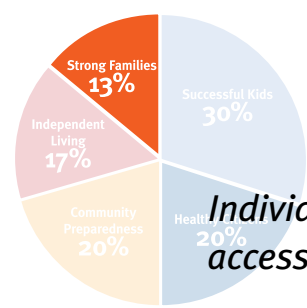
Healthy Citizens Partner Agencies:

- American Heart Association
- American Lung Association
- American Red Cross, Canadian Valley Chapter
- American Red Cross of Central Oklahoma
- American Red Cross, Heart of Oklahoma Chapter
- Arthritis Foundation, Oklahoma Chapter
- Catholic Charities
- Central Oklahoma Integrated Network System, Inc. (COINS)
- A Chance to Change Foundation
- D-DENT, Inc.
- Easter Seals Oklahoma
- HeartLine, Inc.
- Hospice of Oklahoma County, Inc.
- John W. Keys Speech and Hearing Center
- Mental Health Association of Central Oklahoma, Inc.
- NorthCare
- Oklahoma Medical Research Foundation (OMRF)
- Safe Kids Oklahoma
- Sunbeam Family Services, Inc.
- Tri-City Youth and Family Services
- Urban League of Greater Oklahoma City, Inc.
- Variety Health Center, Inc.
- YMCA of Greater Oklahoma City
- Youth and Family Services, Inc.
- YWCA Oklahoma City



United Way Impact

98,030 Citizens are healthier
\$1,782,631 Invested in Healthy Citizens



Strong Families

Individuals and families have resources to achieve financial stability as well as access to counseling, debt management, education, job training, and housing.

Initiatives: Emergency Food & Shelter Program, OKC Metro Literacy Coalition, Coalition for Increasing Family Incomes

Financial stability is a critical foundation for family success. Claiming the Earned Income Tax Credit is one way United Way helps low-income families increase their annual earnings.

Through the Coalition for Increasing Family Incomes, United Way, the IRS, Community Action Agency and others partner to provide free tax filing assistance. In 2006, eight sites helped prepare 3,152 tax returns for local families. Qualifying families received as much as 10% of their annual incomes in federal and state tax credits! In the Oklahoma City area, families earned a total of \$3,817,911 through the credits providing a substantial financial boost to those who need it most.

Strong Families Partner Agencies:

- Catholic Charities
- A Chance to Change Foundation
- Citizens Caring for Children
- Community Literacy Centers, Inc.
- Consumer Credit Counseling Service
- HeartLine, Inc.
- Latino Community Development Agency
- Legal Aid Services of Oklahoma, Inc.
- Mental Health Association of Central Oklahoma, Inc.
- Moore Youth and Family Services, Inc.
- Neighborhood Services Organization, Inc.
- NorthCare
- Oklahoma Halfway House, Inc.
- Parents Assistance Center
- Positive Tomorrows
- Possibilities, Inc.
- RSVP of Central Oklahoma, Inc.
- Salvation Army
- Sunbeam Family Services, Inc.
- Travelers Aid & Homeless Assistance Center
- Urban League of Greater Oklahoma City, Inc.
- YMCA of Greater Oklahoma City
- Youth and Family Services, Inc.
- YWCA Oklahoma City

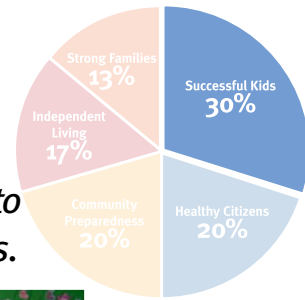


United Way Impact

102,379 Family members served
\$1,200,435 Invested in Strong Families

Successful Kids

Infants, children, and youth are nurtured and given the opportunity to succeed in school, develop life skills, and become productive citizens.



Initiative: Smart Start Central Oklahoma

Studies show that a child's success as an adult is directly impacted by the quality of his or her early development experiences. Our partnership with Smart Start is just one way we provide valuable early learning opportunities to local kids.



In 2006, Smart Start Central Oklahoma added two child care facilities to its Raising A Reader program. Now serving 17 sites, more than 600 low-income preschoolers take a bag full of books home each week to read with their parents. A decade of national research shows that children who are read to daily are more prepared when they enter kindergarten. Raising A Reader helps to provide a great foundation for lifetime learning.



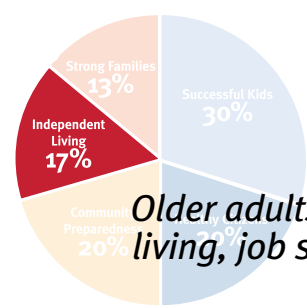
Successful Kids Partner Agencies:

- American Red Cross of Central Oklahoma
- Big Brothers Big Sisters of Oklahoma
- Boy Scouts of America, Last Frontier Council
- Boys and Girls Club of Oklahoma County, Inc.
- Camp Fire USA, Heart of Oklahoma Council
- Celebrations Preschool, Inc.
- Citizens Caring for Children
- Coffee Creek Riding Center
- Easter Seals Oklahoma
- Girl Scouts, Red Lands Council
- Latino Community Development Agency
- John W. Keys Speech and Hearing Center
- Moore Youth and Family Services, Inc.
- Parents Assistance Center
- Positive Tomorrows
- Salvation Army
- Special Care, Inc.
- Sunbeam Family Services, Inc.
- Tinker AFB Youth Center
- Variety Health Center, Inc.
- YMCA of Greater Oklahoma City
- Youth Cornerstone
- Youth and Family Services, Inc.
- YWCA Oklahoma City



United Way Impact

63,892 Kids are more successful
\$2,665,679 Invested in Successful Kids



Independent Living

Older adults and the disabled are engaged in the community with access to independent living, job skills, volunteer positions, and dynamic relationships while their primary care givers receive respite and support.



Initiative: Oklahoma County Senior Summit

United Way helps seniors and the disabled to live as independently as possible through programs that provide transportation and meals, work and volunteer opportunities, and social interaction and health care. One couple's story is representative of the benefits thousands are receiving thanks to United Way funded programs.

Gene and Debbie have been married for years. Gene has cerebral palsy and Debbie is blind. Their disabilities make work impossible. Although they receive government support, they live on less than \$10,000 per year.



With limited financial resources, health care is a luxury they often can't afford. Thankfully, Dentists for the Disabled and Elderly in Need of Treatment, or D-DENT, provides their dental care. Dr. Harris, a D-DENT dentist, has agreed to provide their dental services until he retires. Now they get regular cleanings and other dental services.



Independent Living Partner Agencies:

- Areawide Aging Agency, Inc.
- Arthritis Foundation, Oklahoma Chapter
- Daily Living Centers, Inc.
- Dale Rogers Training Center, Inc.
- D-DENT, Inc.
- EARC, Inc.
- Heartline, Inc.
- Hospice of Oklahoma County, Inc.
- John W. Keys Speech and Hearing Center
- Lennie Marie Tolliver Alternative Care Center, Inc.
- Mental Health Association of Central Oklahoma, Inc.
- Metropolitan Better Living Center
- NorthCare
- Oklahoma Foundation for the Disabled, Inc.
- Oklahoma Goodwill Industries, Inc.
- RSVP of Central Oklahoma, Inc.
- Salvation Army
- Sunbeam Family Services, Inc.
- YMCA of Greater Oklahoma City
- YWCA Oklahoma City



United Way Impact

22,921 People are living more independently

\$1,538,327 Invested in Independent Living

Doing the Most with Your Donation: Community Investment

United Way's Community Investment process ensures our stewardship. Through this annual process, United Way donors carefully review funding requests and make recommendations to our Board of Directors regarding programs and agencies to receive support.

In 2006, 220 donor volunteers representing over 80 organizations spent more than 4,800 hours scrutinizing current Partner Agencies and other non-profits hoping to join the United Way network. After visiting each agency, evaluating audits and financial data, and considering program goals and results, these volunteers brought their recommendations to the board.

Led by Dee Niles, KPMG, and Shane Wharton, Love's Travel Stops and Country Stores, the recommendations made were unanimously accepted. More than \$9,000,000 was distributed among 57 local non-profits. A Chance to Change and Safe Kids Oklahoma were accepted as new Partner Agencies.

A complete listing of United Way funding is below. Distributions were made based upon 2005 fund raising campaign pledges. Final payments of these dollars were made in June 2007.



Distribution Base:

2005 Campaign Pledges	\$ 15,745,949	Moore Youth & Family Services, Inc.	\$ 50,409
Less Allowance for Pledge Loss	\$ (1,131,729)	Neighborhood Services Organization, Inc.	165,972
Net Available for Distribution	\$14,614,220	NorthCare	214,500
American Heart Association	\$ 155,180	Oklahoma Foundation for the Disabled, Inc.	124,200
American Lung Association of Oklahoma	62,597	Oklahoma Goodwill Industries, Inc.	36,186
American Red Cross - Canadian Valley	7,829	Oklahoma Halfway House, Inc.	4,677
American Red Cross - Central Oklahoma	1,248,454	Oklahoma Medical Research Foundation (OMRF)	86,730
American Red Cross - Heart of Oklahoma	52,866	Parents Assistance Center	151,000
Areawide Aging Agency, Inc.	29,203	Positive Tomorrows	96,349
Arthritis Foundation, Oklahoma Chapter	101,997	Possibilities, Inc.	17,021
Big Brothers Big Sisters, Inc.	115,299	RSVP of Central Oklahoma, Inc.	95,678
Boy Scouts of America - Last Frontier Council	408,506	Safe Kids Oklahoma	15,600
Boys & Girls Club of Oklahoma County, Inc.	102,650	Salvation Army	822,129
Camp Fire USA - Heart of Oklahoma Council	228,818	Special Care, Inc.	265,910
Catholic Charities	259,575	Sunbeam Family Services, Inc.	688,562
Celebrations Preschool	100,360	Tinker AFB Youth Center	16,153
Central Oklahoma Integrated Network System (COINS)	18,000	Travelers Aid & Homeless Assistance Center	256,006
A Chance to Change Foundation	34,000	Tri-City Youth & Family Services	9,639
Citizens Caring for Children	63,181	Urban League of Greater Oklahoma City, Inc.	253,748
Coffee Creek Riding Center	71,744	Variety Health Center, Inc.	327,545
Community Literacy Centers, Inc.	65,864	YMCA of Greater Oklahoma City	358,960
Consumer Credit Counseling Service	20,228	Youth & Family Services, Inc.	36,688
D-DENT, Inc.	63,670	Youth Cornerstone	22,700
Daily Living Centers, Inc.	184,404	YWCA of Oklahoma City	451,095
Dale Rogers Training Center, Inc.	103,684	Sub Total	\$ 9,006,816
EARC, Inc.	46,481	Other Distributions:	
Easter Seals Oklahoma	11,707	United Way of Logan County	\$ 168,554
Girl Scouts - Red Lands Council	189,234	United Way of Canadian County	191,477
HeartLine, Inc	144,078	Other United Ways	254,816
Hospice of Oklahoma County, Inc.	175,504	Combined Federal Campaign Designations	2,146,345
John W. Keys Speech & Hearing Center	20,944	Heart of the City Designations	73,920
Latino Community Development Agency	100,945	State Charitable Campaign Designations..	167,984
Legal Aid Services of Oklahoma, Inc.	102,092	United Way of America Dues	124,937
Lennie Marie Tolliver Alternative Care Center, Inc.	36,194	Resource Development	1,388,944
Mental Health Association of Central Oklahoma, Inc.	86,371	Organizational Administration	1,090,427
Metropolitan Better Living Center	27,700	Allowance for Pledge Loss	1,131,729
		Total	\$ 15,745,949

By the Numbers: 2006 Campaign Report

The annual fund raising drive is United Way's most readily identified activity. With more than 50,000 local donors contributing to the effort each year, it's no wonder that the campaign receives significant attention.

Cliff Hudson, CEO of Sonic, America's Drive-In, served as Chairman of the 2006 fund drive along with a cabinet of volunteers representing all areas of our community. Thanks to their leadership and the generosity of local citizens, an unprecedented \$16,521,471 was contributed. This record-setting total represents an increase of nearly \$800,000 over the previous year. More importantly, these dollars support programs that impact countless lives.

Reported campaign results include pledges made through six unique campaigns each managed simultaneously by United Way of Central Oklahoma. United Way is proud to serve the employees of both private business and local government in providing an efficient, effective way to make a charitable contribution in the workplace. Each campaign set a new record to achieve our milestone total for 2006. The results were as follows:

United Way of Central Oklahoma	\$12,391,709
United Way of Canadian County	110,602
United Way of Logan County	170,264
Central Oklahoma Combined Federal Campaign	3,047,742
State Charitable Campaign (OKC metro area)	426,978
Heart of the City Campaign (City of OKC)	374,176
TOTAL	\$16,521,471



2006 campaign funds will be distributed between July 2007 and June 2008 and will be reported in the 2007 Annual Report.

In the Media: 2006 Advertising Donations



"I feel fortunate to be able to help those in need."

Todd Edmonds
Architect
HSE Architects
United Way contributor for 5 years

My community.
My investment.

By investing in United Way, I will help about 350,000 central Oklahomans this year. My contribution supports programs at local non-profits that serve children, families, the disabled and the elderly. I have the satisfaction of helping to provide our Community Safety Net through United Way's network of Partner Agencies.



Join me in investing in United Way.
Together, we're building a stronger, healthier and more compassionate community.

\$300,000+ Donated Media Value

Cox Communications
KFOR-TV Channel 4
Lamar Outdoor

\$100,000 - 299,000 Donated Media Value

KOKH Fox 25 & KOCB WB 34
Tyler Media

\$50,000 - 99,000 Donated Media Value

Citadel Communications
KAUT UPN 43
KOCO Channel 5
The Oklahoman
Perry Publishing & Broadcasting Co.
Renda Broadcasting

\$10,000 - 49,000 Donated Media Value

The Black Chronicle
Clear Channel Communications
The Journal Record
KWTW Channel 9

\$2,000 - 9,900 Donated Media Value

Edmond Sun
Metro Family
MidCity Advocate
OKC Business
Oklahoma Gazette
South Oklahoma City Chamber
Southwestern Publishing
Tinker Take-Off

\$250 - 1,900 Donated Media Value

The Point
(Greater Oklahoma City Chamber)
Edmond Life & Leisure
El Reno Tribune & Mustang News
Oklahoma Banker
Pioneer
(Oklahoma City Community College)
Talon
(Oklahoma Christian University)
Yukon Review

Special Thanks to those who donated their services to produce the 2006 United Way advertising campaign:

McNeese Fitzgerald Associates - Photography; Digital DK and Sabolich Productions - Video Production; RK-1 Productions - Audio Production; Third Degree Advertising - Creative Direction; Tyler Media - Spanish Video Production.

Statement of Financial Position

United Way of Central Oklahoma Incorporated

December 31, 2006
(with summarized financial information for 2005)

Assets	Unrestricted	Temporarily Restricted	Total 2006	Total 2005
Cash and cash equivalents	\$ 5,326,550	\$ 222,619	\$ 5,549,169	\$ 4,753,132
Pledges receivable, net	7,954,331	—	7,954,331	6,154,001
Grants receivable	—	—	—	85,000
Investments	458,939	300,000	758,939	758,939
Property and equipment, less accumulated depreciation	338,083	—	338,083	385,492
Other assets	42,897	—	42,897	38,732
	\$ 14,120,800	\$ 522,619	\$ 14,643,419	\$ 12,175,296
Liabilities and Net Assets				
Liabilities				
Accounts payable and accrued expenses	\$ 483,674	—	\$ 483,674	\$ 394,227
Allocations and designations payable	5,076,432	—	5,076,432	4,624,413
Total liabilities	5,560,106	—	5,560,106	5,018,640
Net assets	8,560,694	522,619	9,083,313	7,156,656
	\$ 14,120,800	\$ 522,619	\$ 14,643,419	\$ 12,175,296



*The above information has been extracted from the December 31, 2006 audited financial statement.
A complete copy of the audited financial statement is available upon request.*

2006 Board of Directors:

Chairman of the Board

V. Burns Hargis
Bank of Oklahoma, N. A.

Vice Chairman

Roy W. Page
Third Degree Advertising

Chair-Elect

Luke R. Corbett
Kerr-McGee Corporation

Secretary/Treasurers

David Harlow
BancFirst

Susan V. Hillis
KPMG LLP

Administration Chair

Douglas J. Stussi
Love's Travel Stops &
Country Stores, Inc.

Audit Chair

Mark A. Wood
Ernst & Young LLP

Campaign Chair

Cliff Hudson
Sonic, America's Drive-In

CFC Chair

Julie Gosdin
United States Postal Service

Community Investment Chairs

Dee Niles
KPMG LLP

Shane Wharton
Love's Travel Stops &
Country Stores, Inc.

Labor Chairs

Tim O'Connor
Central Oklahoma AFL-CIO

Perry Sneed
Sheetmetal Workers
Local 124 AFL-CIO

Legal Counsel

Kenneth N. McKinney
Tomlinson & O'Connell

Marketing Chair

Mary Hendrick
Community Volunteer

Personnel Chair

Joy Reed Belt Ph. D.
Joy Reed Belt & Associates

Research & Convening Chair

James Elder
Mock, Schwabe, Waldo, Elder,
Reeves & Bryant

Special Events Chair

Bert Marshall
Blue Cross Blue Shield

2006 Board Members

Randy Alvarado - Martin Bionics, LLC

Michael L. Anderson - Oklahoma City Firefighters Association, Local 157

Dave Bialis - Cox Communications

Dwayne Boggs - Federal Reserve Bank of Kansas City, OKC Branch

Dr. John Bozalis - Oklahoma Allergy & Asthma Clinic

Don Cain - AT&T Oklahoma

David R. Carpenter - American Fidelity Assurance

Gary Clough - UAW Local 1999

Joseph Clytus, Jr. - Utilities Information Service

Terri L. Cwiklinski - American Fidelity Assurance

Scott G. Davis - Asset Management Advisors, LLC.

Pete Delaney - OG&E Energy Corp.

Pat Dennis - The Oklahoman

Bob Dilg - MidFirst Bank

Todd Edmonds - HSE Architects

Carl Edwards - Price Edwards & Company

David Gray - OKC Federation of Classified Employees AFT Local 4574

G. P. Johnson Hightower - Stillwater National Bank & Trust Company

Christopher D. Howard - SSM Health Care of Oklahoma

Brenda Hudson - Dell, Inc.

Grant C. Humphreys - Humphreys Capital Investment

LeAnn Jenkins - Oklahoma Federal Executive Board

Nancy Koeper - United Parcel Service

C. Bruce Lawrence - INTEGRIS Health

Robert O. Lorenz - Community Volunteer

Jerry Maier, FACHE - OU Medical Center

Ed Martin - Ackerman McQueen

Steve Mason - Cardinal Engineering

Matt McGuire - Heritage Trust

Gregory W. Meacham - The Benham Companies, LLC

Wes Milbourn - KFOR-TV Channel 4 / KAUT Channel 43

Bob Moore - Oklahoma City Public Schools

J. Larry Nichols - Devon Energy Corporation

David Ortloff - KFOR-TV Channel 4

Mike Packnett - Mercy Health Center

Garry Richey - Oklahoma City Air Logistics Center

K. Randy Roper - MidFirst Bank

Jim Roth, Esq. - Oklahoma Corporation Commission

Marc C. Rowland - Chesapeake Energy Corporation

Lee Symcox - First Fidelity Bank

Robert W. Toler - Federal Reserve Bank of Kansas City, OKC Branch

Thomas L. Travis - IBC Bank

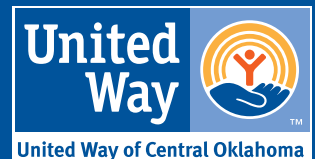
Chad Wilkerson - Federal Reserve Bank of Kansas City, OKC Branch

Phyllis Worley - Oklahoma Natural Gas

George E. Young, Sr. - Holy Temple Baptist Church

James N. Young - J P Morgan Chase Bank

Your community.
Your investment.



P.O. BOX 837
Oklahoma City, OK 73101
PHONE: 405.236.8441
FAX: 405.235.2011